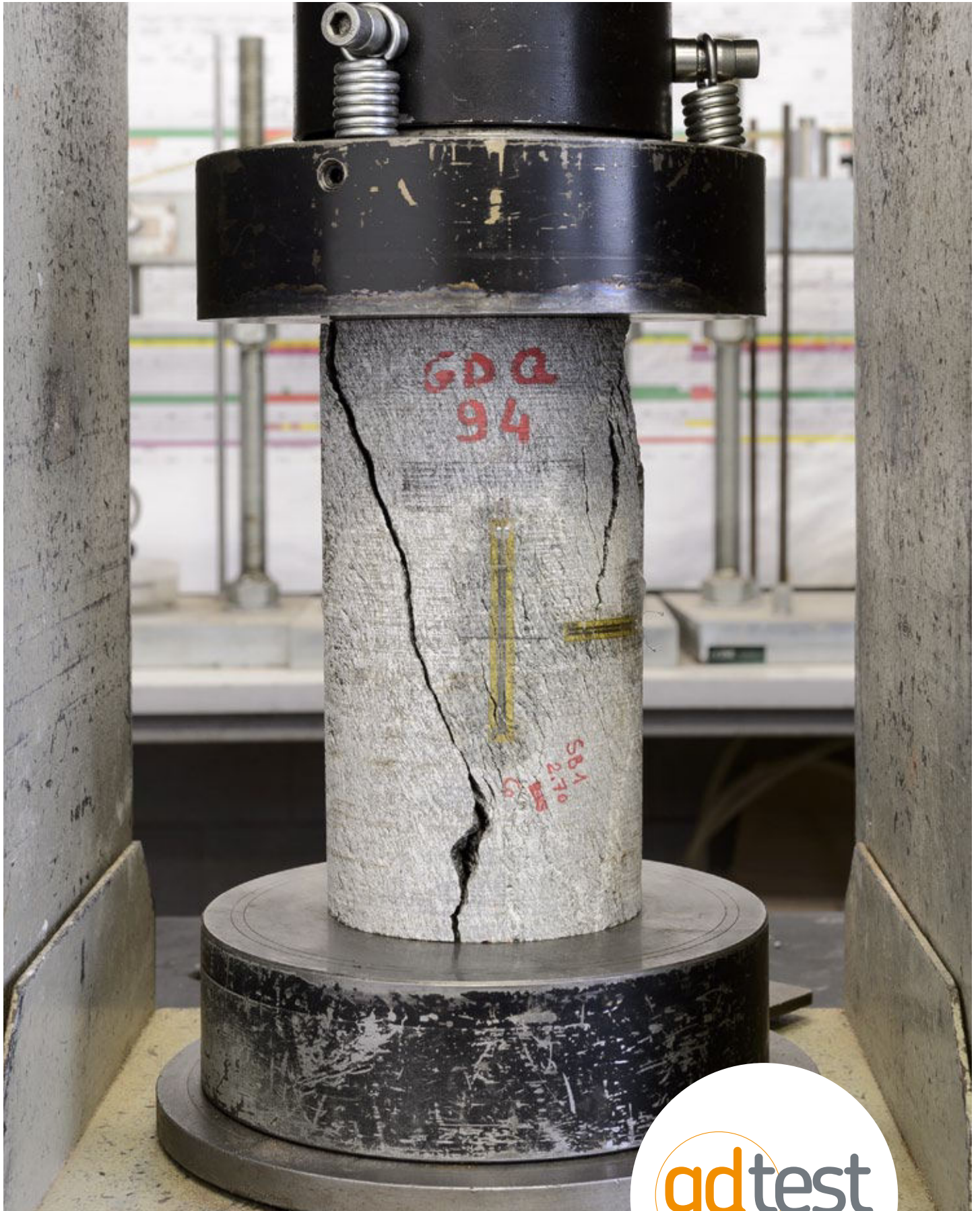


# Rock Laboratory



# Rock Laboratory

The laboratory is authorized by the Ministry of Infrastructure and Transportation for the execution and certification of Tests on soil and rocks (A & B sectors), aggregates and external tests in compliance with circular n. 7618/STC 2010 ART.59 D.P.R. 380/01



## Physical-chemical and petrographical characterization

- Unit weight, water content, porosity, imbibition coefficient, water depth penetration, carbonate content, petrographic and modal analysis, rock quality index, equivalent quartz content, diffractometric analysis

## Geomechanical characterization

- Uniaxial and triaxial compression and determination of deformability and intrinsic strength parameters of the rock
- Indirect tensile strength "Brazilian" test
- Creep tests
- Elastic P and S wave velocity measurement in free and weight-bearing conditions
- Direct shear test and determination of parameters "c" e " $\phi$ "
- Slake Durability Test
- Geomechanical indices
- Tilt Test
- Point Load Test
- Determination of swelling indices and swelling pressure

## Characterization of mechanised excavation

- CERCHAR hardness and abrasion tests
- LCPC abrasion index
- Cone indenter hardness
- Punch penetration test
- Perforability test (Siever's Test)
- Impact tests (Brittleness Test)
- DRI and CLI indices

## Tests for natural construction stones in compliance with CE standards

- Petrographic description
- Bending resistance
- Compression resistance
- Unit weight and porosity
- Frost resistance
- Abrasion resistance
- Slip resistance
- Water absorption







GD TEST S.r.l | Società unipersonale  
Legal and operative office:  
Corso Casale 239 | 10132 TORINO Italy

[www.gdtest.it](http://www.gdtest.it)